



HDview ^{WF}

4 CHANNEL WIRE FREE FULL HD CCTV SYSTEM



FHDV4KBWF
FHDV4RWF
FHDVC4FBWF

USER MANUAL



www.espuk.com



CONTENTS

- NVR Description 3
- Basic Operations 5
- Record Setup 8
- Playback Recording 10
- Transferring to USB 11
- Pairing Additional Cameras 12
- Remote Viewing 13
- Help Guide 18

This manual is designed to be used as a quick start guide alongside the informative general user interface (GUI) of the NVR.

Quick Notes;

- The Cameras supplied in the kit are preregistered to the NVR.
- Cameras supplied separately will need to be registered to the NVR.
- The NVR will require a connection to a monitor to be programmed.
- Please format the pre-installed Hard Drive during setup.
- Although the system utilizes the latest in Wire Free technology the NVR and cameras will require a power supply each.

IMPORTANT NOTICE

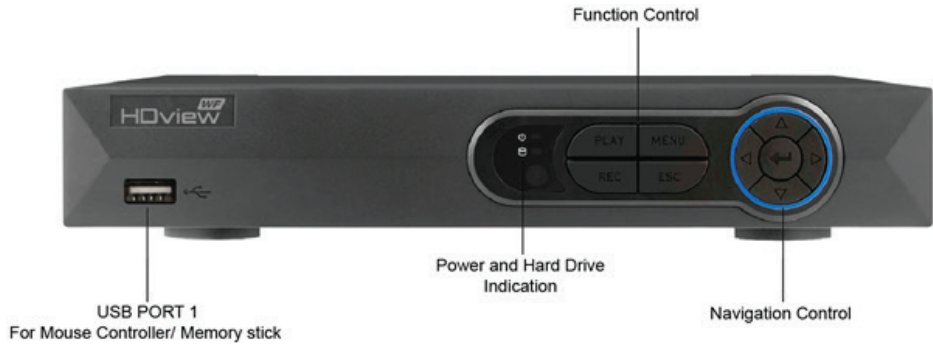
- **Please read this manual** and keep for later use
- Do not use accessory devices not recommended by the manufacturer
- Please use the power adapter equipped for the unit
- Please do not touch any control parts not mentioned in the manual. Incorrect adjustment of a control part not mentioned in the manual may damage the machine
- Ensure air ventilation around the unit and do not cover or block the vent hole
- Do not place the unit in direct sunlight or near a heat source



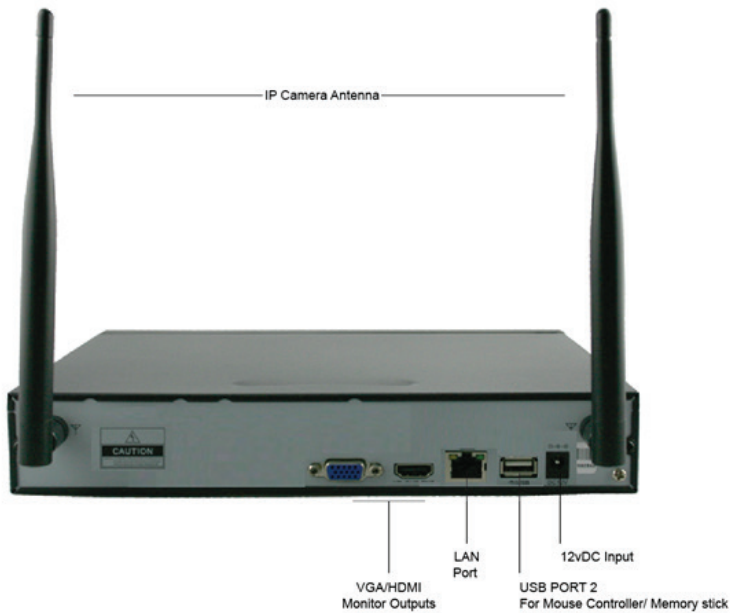


NVR DESCRIPTION

FRONT PANEL

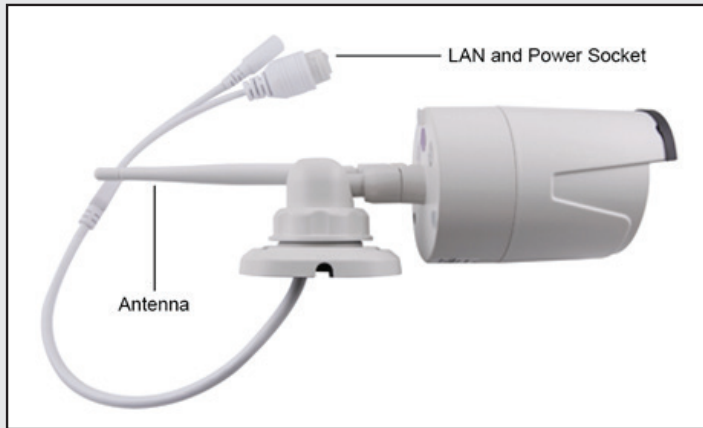


REAR PANEL





IP CAMERA DESCRIPTION



Although the housing of the IPC is weatherproof, the LAN port and power connection require weatherproof housing.

For best wire free signal insure system antennas run parallel;



Wire Free Technology

The stated Open field range of 150M is across an open field. Any line of transmission obstruction will reduce the useful range.

When siting units consider minimising the number of walls, trees, doors, hills within landscaping or other solid objects that exist along the line of transmission.

Avoid a line of transmission that follows the whole length of a wall rather than directly through it.

A small adjustment to the position of either transmitter or receiver can make a huge difference to performance.

Avoid siting transmitter or receiver units in close proximity to other wire free equipment such as routers, baby monitors or sources of electrical energy such as microwave ovens, very high voltage cable etc..





BASIC OPERATIONS

CONNECTION TO A MONITOR

The NVR has a HDMI and VGA output to connect to a monitor. Please select the appropriate connection and select the correct input channel on the monitor.

POWER ON

Plug the power supply to the DC12V terminal and Switch On from the rear panel.

POWER OFF

Turn off the NVR at the mains power source after selecting the power off option from the **Shortcut Menu/ Exit System**.



LIVE VIEWING

On start up the NVR will display a divided screen. Using the Mouse Control, double click on any image to bring to full screen. Double click again to return to that main divided screen.

The recording status and alarm status are indicated by the following icons:



Recording



Motion Detect



Time defined recording

Each channel with a paired camera will also display the signal strength;



Disconnected



Low Signal



Average Signal



High Signal





TO ACCESS THE MENU

Right click the mouse anywhere on screen to activate the **Shortcut Menu**.

Selecting **Main Menu** option will automatically display the **System Login** screen.

The default settings are:

User Name: Admin

Password: 'leave blank'

A screenshot of a login dialog box with a dark blue background. It features two input fields: 'Username' with the text 'admin' and 'Password' which is empty. Below the fields are two buttons labeled 'Ok' and 'Cancel'.

Once logged in, right click to access menu selections.

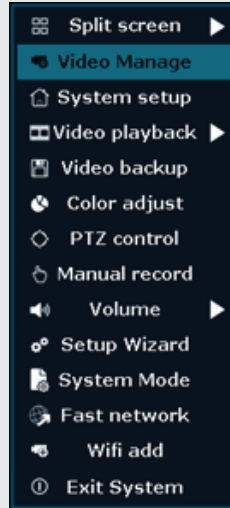
An opportunity to change the password is provided within the settings menu. Please note if an incorrect password is entered three times the NVR alarm will activate. If a wrong password is entered five times the system will lock out. To reset the system turn the main power off and back on after 5 minutes.





SHORTCUT MENU

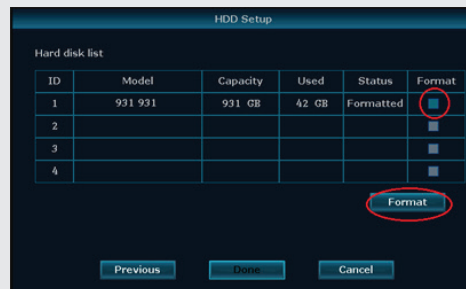
Right-clicking on the live camera screen will activate the **Shortcut Menu** where the most regularly used settings can be found.



Before first use, please Format the Hard Drive (HDD)

Enter the Short Cut menu;

- >Select System Setup
- >Select General Setup
- >Select HDD Setup
- >Highlight HDD
- >Select the option to Format.



The unit is now ready to record





RECORD SETUP

RECORD CONFIGURATION

Manual Record-

As default the unit will be set to manual record, the cameras are recording continuously and the HDD will automatically overwrite the oldest data available.

To access the menu enter the **Shortcut Menu** and select **Manual Record**.



Motion and Schedule Record-

Access the Shortcut Menu > System Setup > record set up

Channel

Select 1-4

Weekday

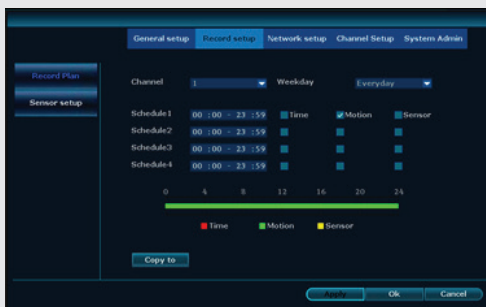
Select day off

Schedule1-4

Each camera has the ability to have 4 different record schedules in 1 day.

Time; continuous record for the time period set.

Motion; only records motion triggers picked up by the system.



NB. When entering the 'Record Setup' the default screen will always start with a display of the settings for Channel 1 and the current day's schedule.



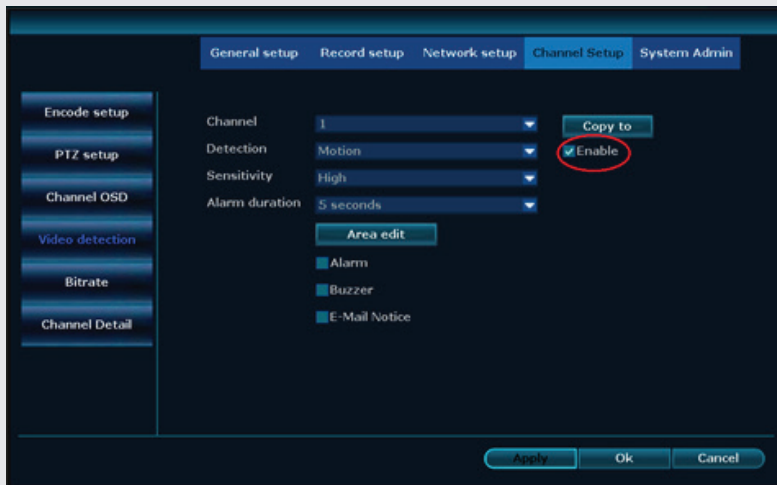


Additional Motion Record Settings

Once a camera has been set to 'Motion' in the schedule enter the **Video Detection** menu to define parameters;

From the System Setup menu enter Channel Setup > Video Detection.

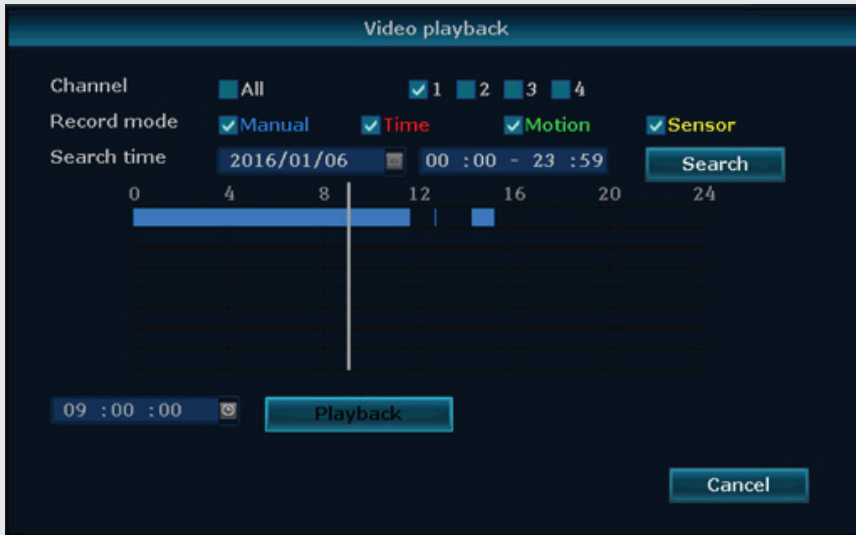
Select required channel and ensure option is enabled before adjusting the on screen settings.



RECORDING PLAYBACK

The NVR records all camera footage to the internal Hard Drive.
To access the footage enter the Shortcut Menu >Video Playback.

Manual search allows the user to define the exact point of when to begin playback.



NB. Practice playing back footage to familiarize with the process before an incident occurs.

NB. As default the record resolution is set to 1080p. For best performance in this resolution it is recommended that only one channel at a time is selected for playback.



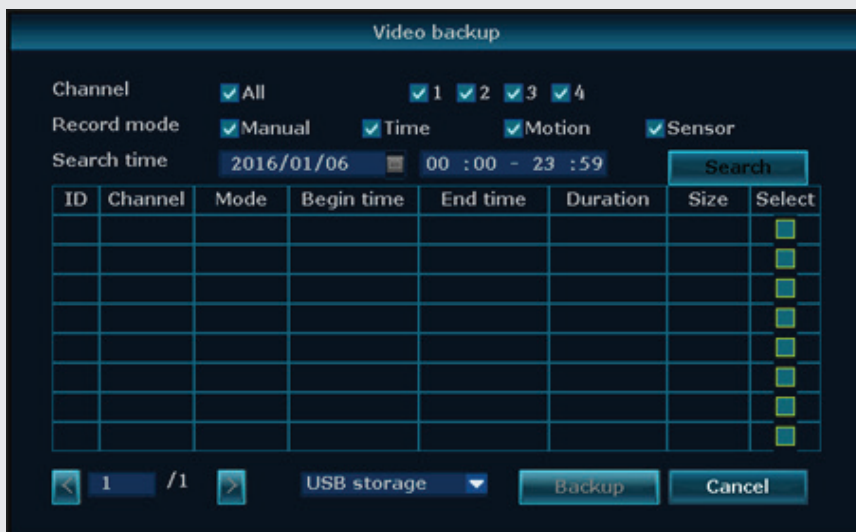
TRANSFERRING A RECORDING TO USB

To extract footage from the Hard Drive please insert a USB memory stick (8GB MAX.) into a free USB port on the NVR.

Enter the Shortcut Menu > Video Back up,

Define, search and select the required footage before selecting backup.

The NVR will place an AVI file on the USB Memory stick.



NB. Practice backing-up footage to familiarize yourself with the process before an incident occurs.

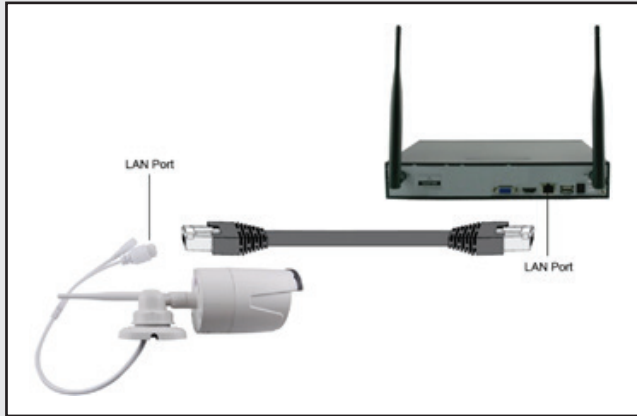
NB. The AVI file will enable playback via a PC using AVI players such as Windows Media Player and DIV-X.





PAIRING ADDITIONAL CAMERAS

The NVR is supplied with 2 pre-registered cameras, to add an additional camera; Connect the additional Camera to the NVR using the LAN port on the NVR using the supplied network cable;



With the power on to both devices enter the Short Cut menu on the NVR and select Video Manage
 Select 'Match Code', after 60 secs 'Match Code Successfully' will appear.
 Auto add, and the camera will be visible on the preview screen.





REMOTE VIEWING

Networking should always be carried out by a competent/qualified engineer, specifically when adjusting settings on the router which is sometimes required for remote viewing.

To remote view the NVR using the recommended APP or PC platform.

A cable from the LAN port on the rear of NVR to a spare LAN port on the router is required, then reboot the NVR.

Once the NVR has been added to the network there are different methods to view the system remotely:

Smart-phone APP (IOS/Android)

Connect network cable from the NVR to router > Select Fast Network from the Shortcut menu of the NVR

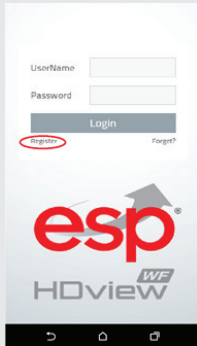
The network status should state 'Healthy Network', if not please ensure DHCP is enabled in the Network Menu and reboot the NVR, check connections and replace network cable if necessary.

Download the **ESP HDview WF** APP for Android or IOS;

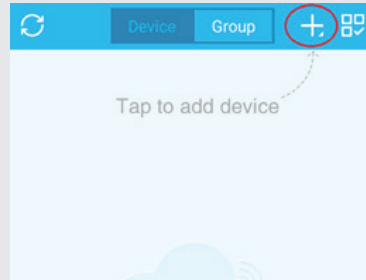




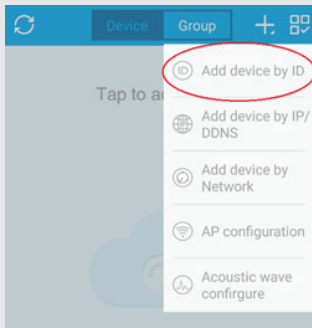
Register a user account and log-in;



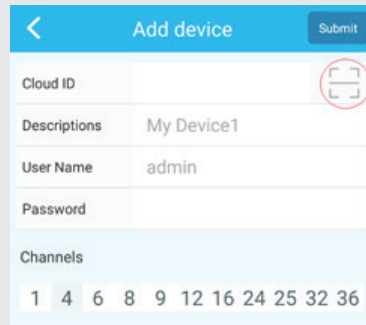
Select the 'Plus' symbol;



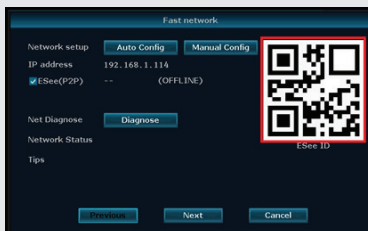
Select 'Add device by ID';



Enter the Cloud ID by selecting the scan symbol;



Scan the QR code on the NVR's 'Fast Network' Page;

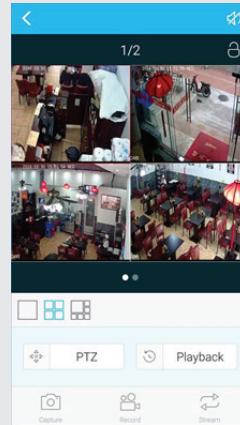




Enter the remaining details and select 'Submit';

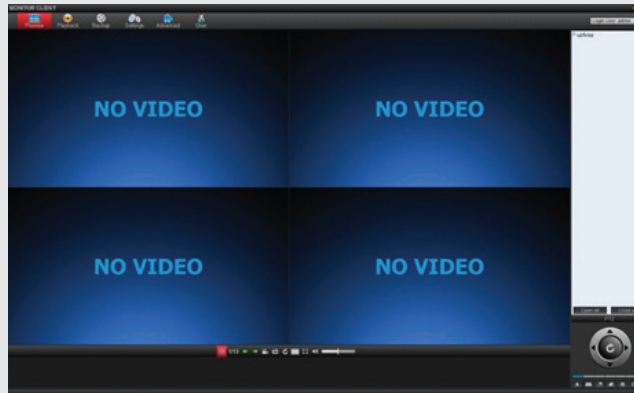
The screenshot shows a mobile application interface for adding a device. At the top, there is a blue header with a back arrow, the text 'Add device', and a 'Submit' button circled in red. Below the header are several input fields: 'Cloud ID' with a refresh icon, 'Descriptions' set to 'User Defined', 'User Name' set to 'admin', and 'Password' set to 'No Password As Default'. At the bottom, there is a 'Channels' section with a list of numbers: 1, 4, 6, 8, 9, 12, 16, 24, 25, 32, 36.

The system will now be accessible;

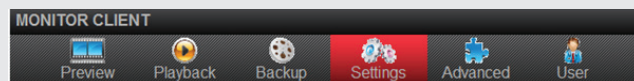


PC/Laptop Software: CMS (Central Management Software) that is supplied on the CD supplied with the NVR (Windows compatible)

Install the CMS file to and open;

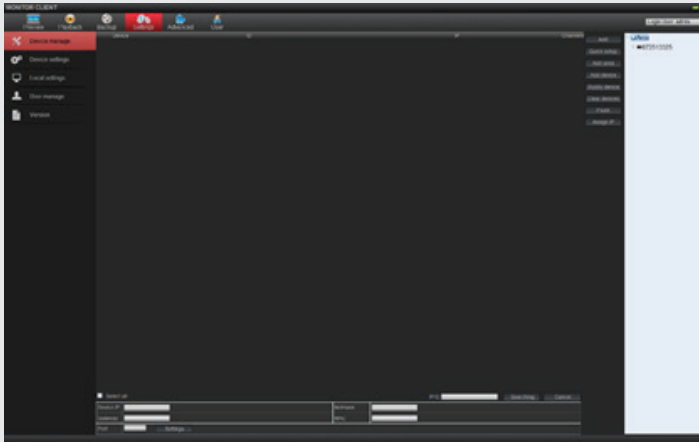


Select Settings;

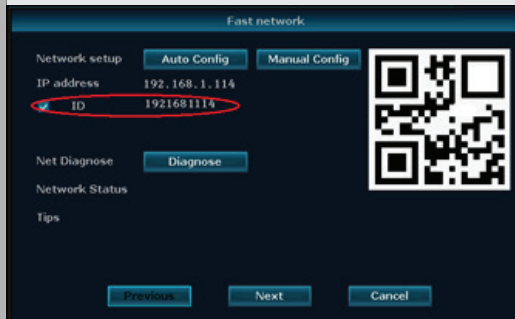
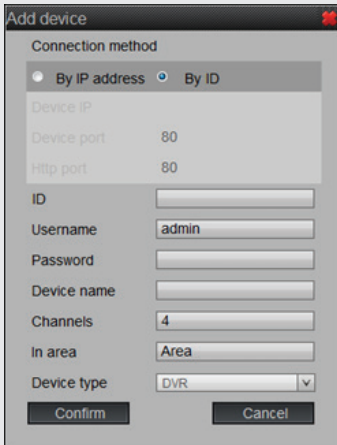




On the 'Settings' page select 'Add Device';



The 'Add Device' menu will open;



Select By ID

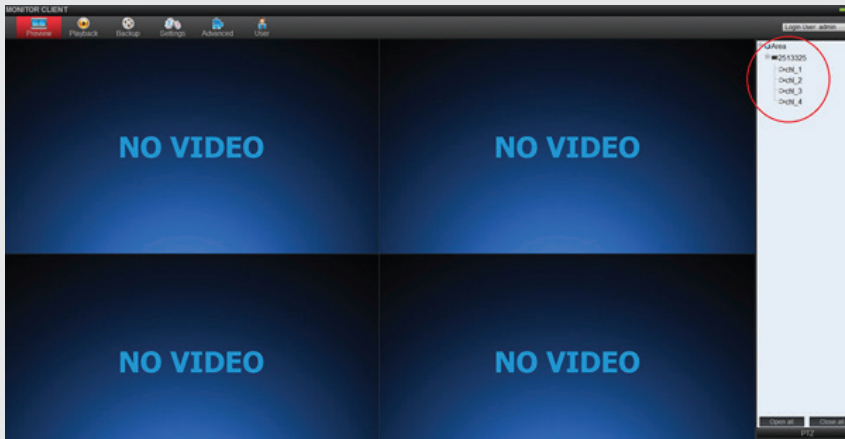
Enter the Cloud ID of the NVR, which can be found on the NVR's 'Fast Network' page.

Proceed to enter the rest of the details including NVR password, user defined 'Device Name' and select Confirm.





The System's details will appear on the 'Preview' page, select to view cameras;



NOTE: ESP are unable to guarantee that every device will be compatible with the NVR and software supplied. Specific models of phone, tablet or other device, the hardware it contains, the service provider, the types of data services offered and specific phone / device plan will all affect the performance of PC / mobile device for remote



Help Guide

In the event of trouble with the system please follow the troubleshooting guide. If further problems persist please contact the installer / supplier.

The NVR will not boot up normally

- a. The incorrect power supply is being used
- b. The power supply is not producing the required voltage
- c. Is the socket for the power supply plugged in and switched on?

Connection issue with the monitor

- a. The monitor cable is not correctly connected or damaged
- b. The incorrect power is applied to NVR / Monitor
- c. The correct input channel has not been selected on the monitor

There are no cameras displayed on the monitor

- a. The camera power supply is not correctly connected or damaged
- b. The camera signal is poor
- c. There is a connection issue with the monitor

I cannot find the video files in Playback mode

- a. Recording did not take place in the specified time range
- b. The recording parameters have not been programmed correctly / switched off
- c. The recording information has been overwritten
- d. Hard drive cannot be detected

NVR cannot detect hard disk

- a. The NVR's power supply is not correctly connected or damaged
- b. The NVR has an incorrect power supply
- c. The HDD has not been connected correctly
- d. An incorrect HDD has been installed

The images appear unstable during playback

- a. The recommend setting for 1080p playback is 1 channel only

Network connection issue

- a. Network is not stable
- b. NVR is not networked correctly





Elite Security Products

Unit 7, Target Park, Shawbank Rd
Lakeside, Redditch B98 8YN



Telephone: 01527 51 51 50

Fax: 01527 51 51 43

email: info@espuk.com

E&OE - Errors and omissions excepted. I16

www.espuk.com

